

Gardens  
Libraries &  
Museums  
UNIVERSITY OF OXFORD



# Mobilising Oxford's cultural assets for social prescribing, health and wellbeing



Harriet Warburton

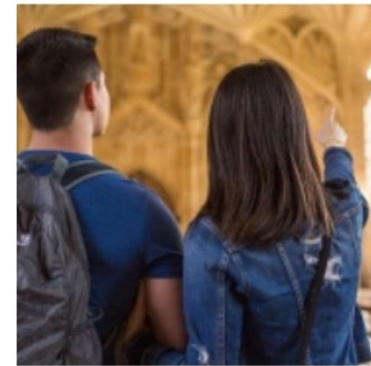
Helen Adams

*UMG 2023*

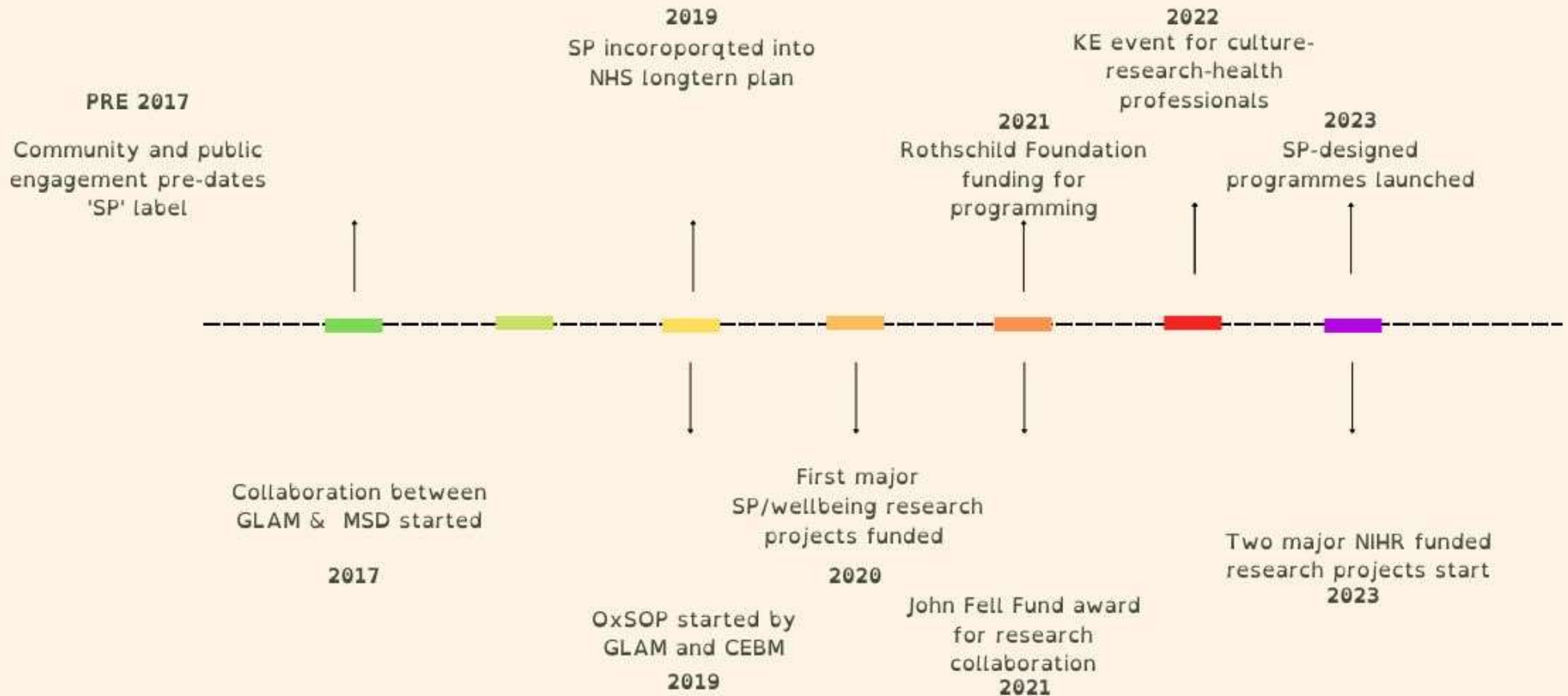
# Meet the teams



**Gardens, Libraries & Museums**  
UNIVERSITY OF OXFORD



# Our Story So far





# For whom?

---

NHS priority groups > < GLAM audience priorities

Are these the same and does it matter?

 Case Study 1: **Younger people**

 Case Study 2: **Older people**



*Do participants and activity providers want to be research subjects?*



*How do we address under-representation in service users?*



# With whom?

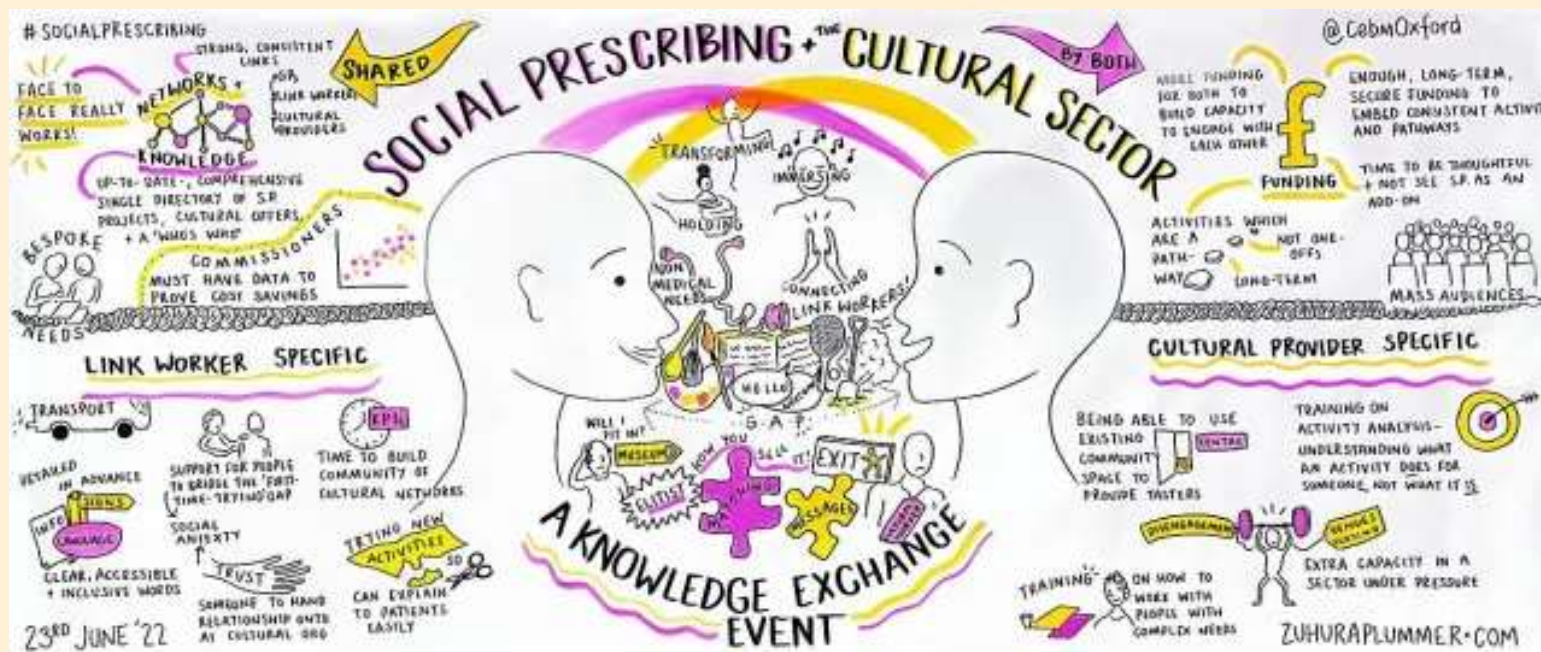
- Researchers
- Link workers and health professionals
- Cultural sector in Oxford & region



*Are we researchers, research support, or cultural providers?*



*Is this a unique role for university museums?*



# Where next?

---

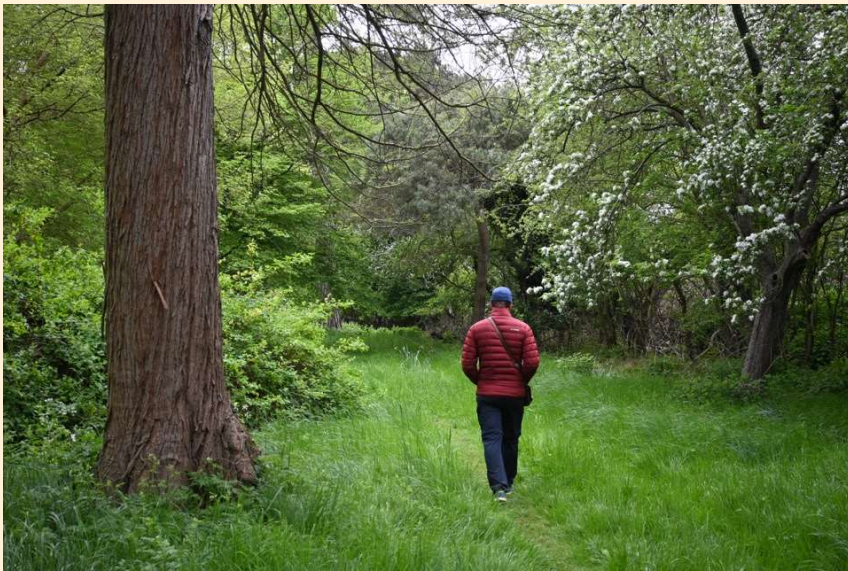


Photo by [Tanya Paquet](#) on [Unsplash](#)

## 1. Evaluating activity and existing tools



*Is it our role to evidence individual-level efficacy?*

## 2. Safeguarding & trauma awareness

## 3. Funding & Continuity



*How do we fund this to ensure regularity and repeatability?*

## 4. Post-referral pathways



*Who should develop and signpost pathways from supported to independent engagement?*

**Gardens  
Libraries &  
Museums**

UNIVERSITY OF OXFORD