



Introducing the Wolfson Centre in Music and Material Culture

Royal College of Music Museum

November 2023

Richard Martin, Digital & Documentation Officer

Royal College of Music Museum

Part of the Royal College of Music, London



Royal College of Music



**Albertopolis / Exhibition Road
South Kensington**



ROYAL
COLLEGE
OF MUSIC
London



Royal College of Music Museum

Re-opened October 2021



New gallery displaying instruments, artwork and manuscripts from late 15th century to modern era.
Interactivity including audio guide and family activity space.
Collection of 14,000+ items, c.150 on display in main gallery.



Royal College of Music Museum

Re-opened October 2021



Concerts



Weston Discovery Centre





Wolfson Centre in Music and Material Culture



Infrastructure



Climate-controlled storage for museum collections.



Conservation workshop

Infrastructure



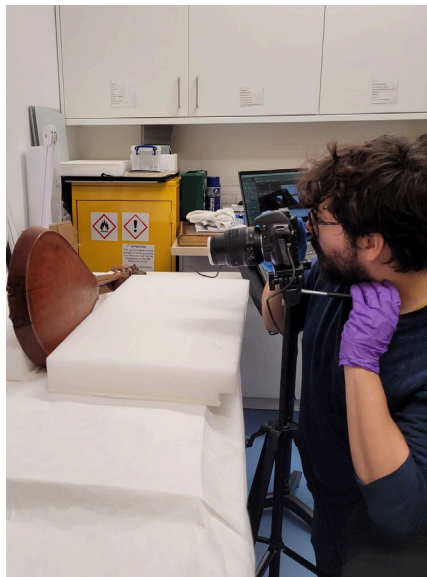
Retrieval of museum collections to our South Kensington site



Opened September 2022



Object-based
learning/teaching



Research facility



Digitisation



Wolfson Centre in Music & Material Culture

Materialising Musical Instruments



Hamburger cithrinchen (cittern),
By Joachim Tielke, 1676



Portrait of a lady holding cittern, c. 1790



Prof. Gabriele Rossi Rognoni
Chair of Music & Material Culture
Museum Curator



Wolfson Centre in Music & Material Culture

Materialising Musical Instruments

Materialising Musical Instruments is a multidisciplinary research project that engages with European Instruments from 1500 to 1600 from a material culture perspective focusing on their role as products of complex processes of manufacture, distribution, use and circulation to foster a better understanding of them as material objects and their contribution in the making of early modern musical soundscape.





Wolfson Centre in Music & Material Culture

Materialising Musical Instruments

Funded by the British Academy Leverhulme Small Research Grant (2021-2022), the project aims to situate early modern instruments within the larger framework of economic interconnections, cultural history of commodities and their production and dissemination.



Materialising Music:
Perspectives in Music
and Material Culture
Conference
8-9 December 2022





Wolfson Centre in Music & Material Culture

PhD Programme Collaborative Development

Collaborative partnership in early stages between RCM, Sorbonne, Leipzig University, and the University of Music and Performing Arts Vienna.

Part of four university courses in Europe which teach Music and Material Culture:

- aiming to formalise a European network in this area, with the Wolfson Centre as the main aggregator
- co-supervising dissertations across the universities





Wolfson Centre in Music & Material Culture

Music, Migration and Mobility

Base for development of exhibition *Music, Migration and Mobility - the story of émigré musicians from Nazi-Europe in Britain (January – May 2023)*.

The exhibition explored the lives and legacies of émigré musicians who fled the Nazi regime and the ravages of war, and their contributions to musical life in the UK.

Funded by the Arts and Humanities Research Council (AHRC), the exhibition was part of a major RCM research project in collaboration with Royal Holloway, University of London and University of Salzburg.

Learn more:

<https://www.musicmigrationmobility.com/>





Wolfson Centre in Music & Material Culture

Wolfson/DCMS - 3D Modelling Project

Enabling the creation of 3D printed models of historically important musical instruments from the collection, increasing outreach and engagement opportunities for visitors with additional needs and younger audiences as well as student musicians.



ROYAL

COLLEGE

OF MUSIC

London



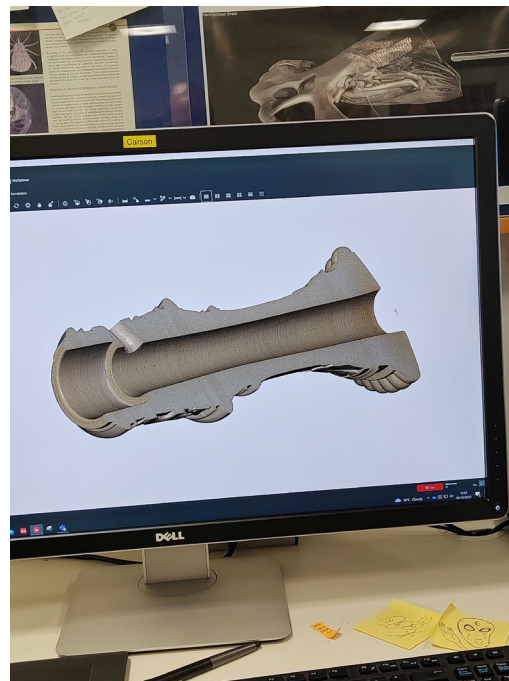
Natural
History
Museum





Wolfson Centre in Music & Material Culture


ROYAL
COLLEGE
OF MUSIC
London





Wolfson Centre in Music & Material Culture



On display



2D reproduction



3D reproduction
prototype

Thank you!



ROYAL
COLLEGE
OF MUSIC

London

www.rcm.ac.uk/museum
richard.martin@rcm.ac.uk